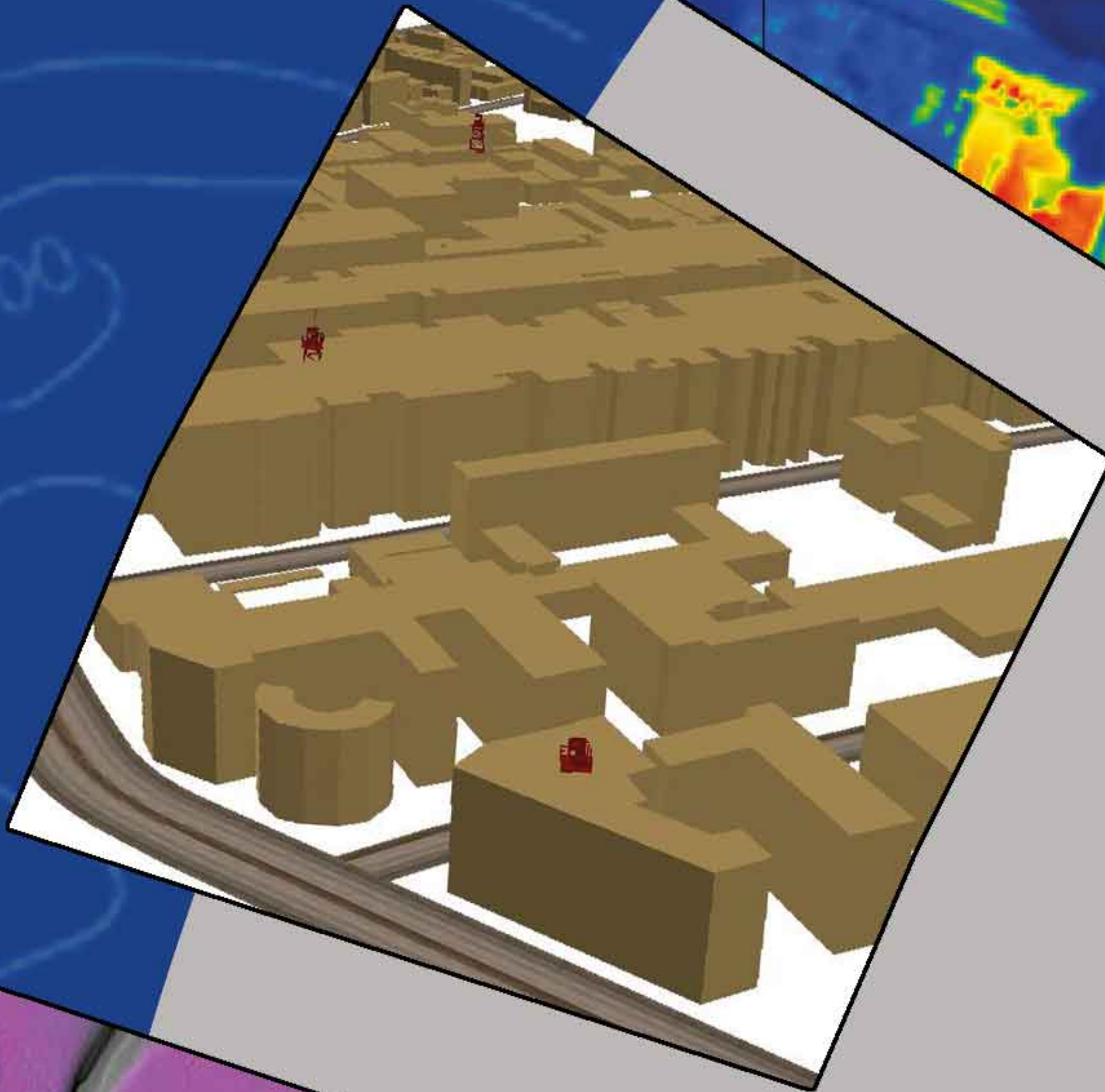
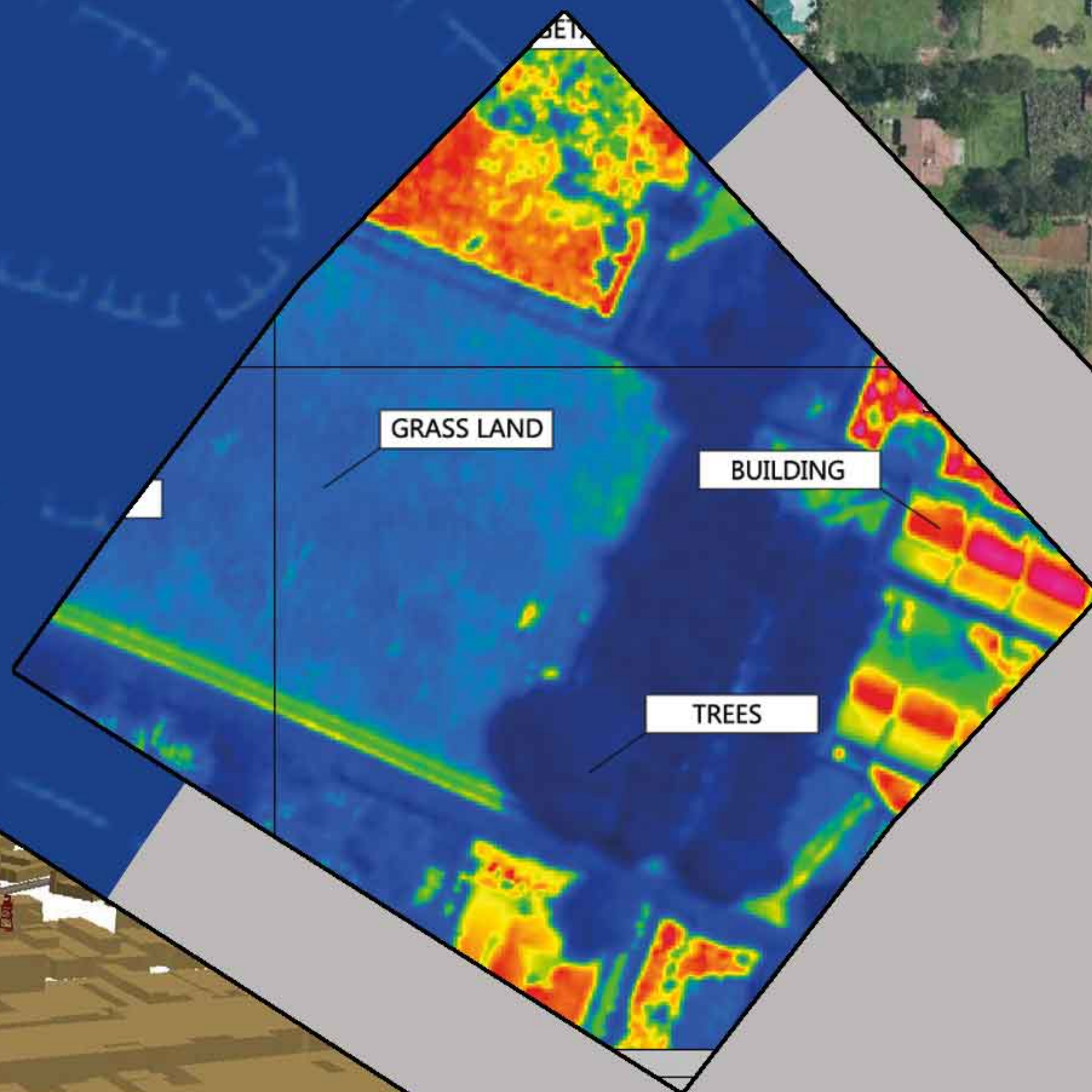
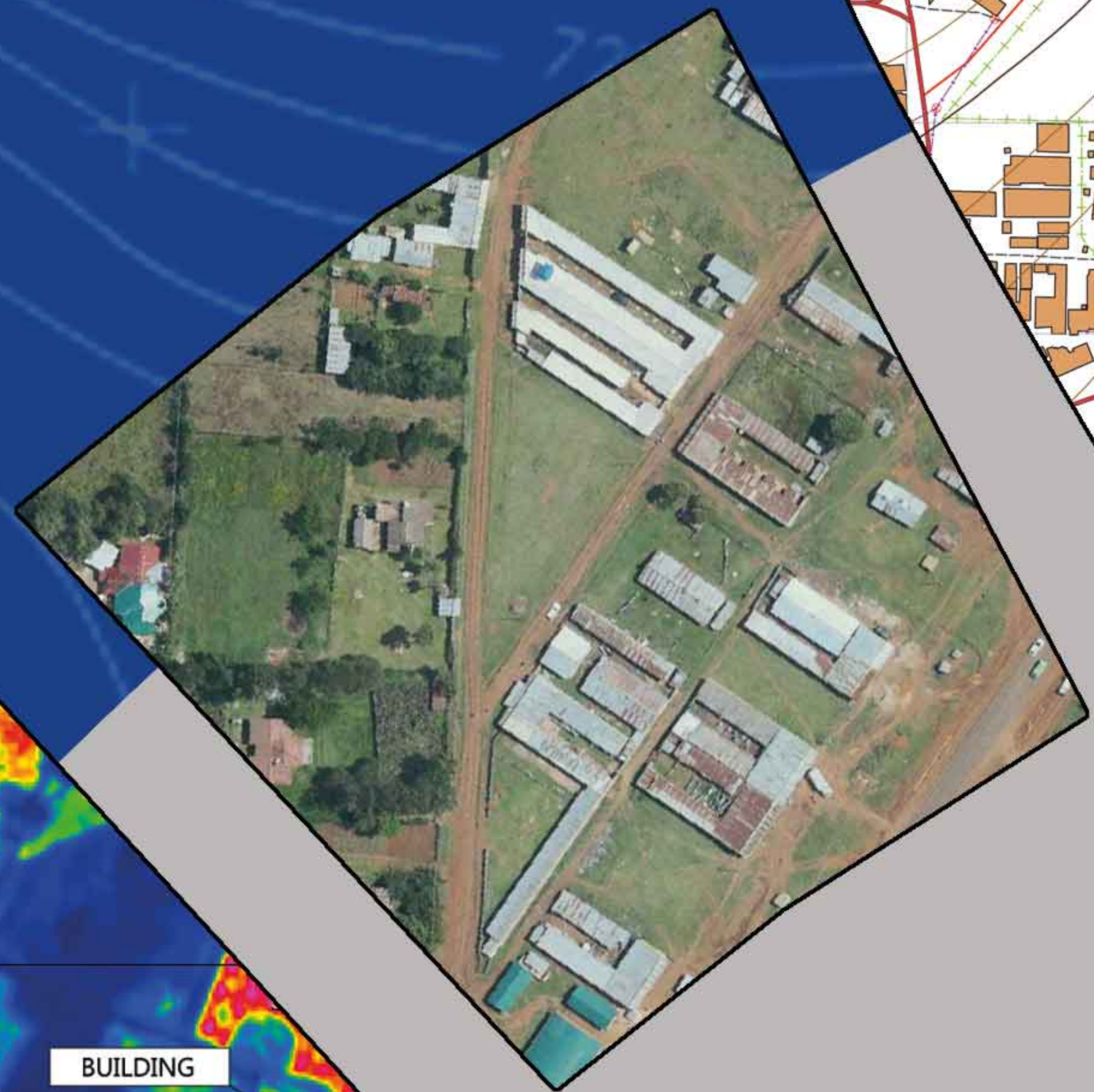


# COMPANY PROFILE



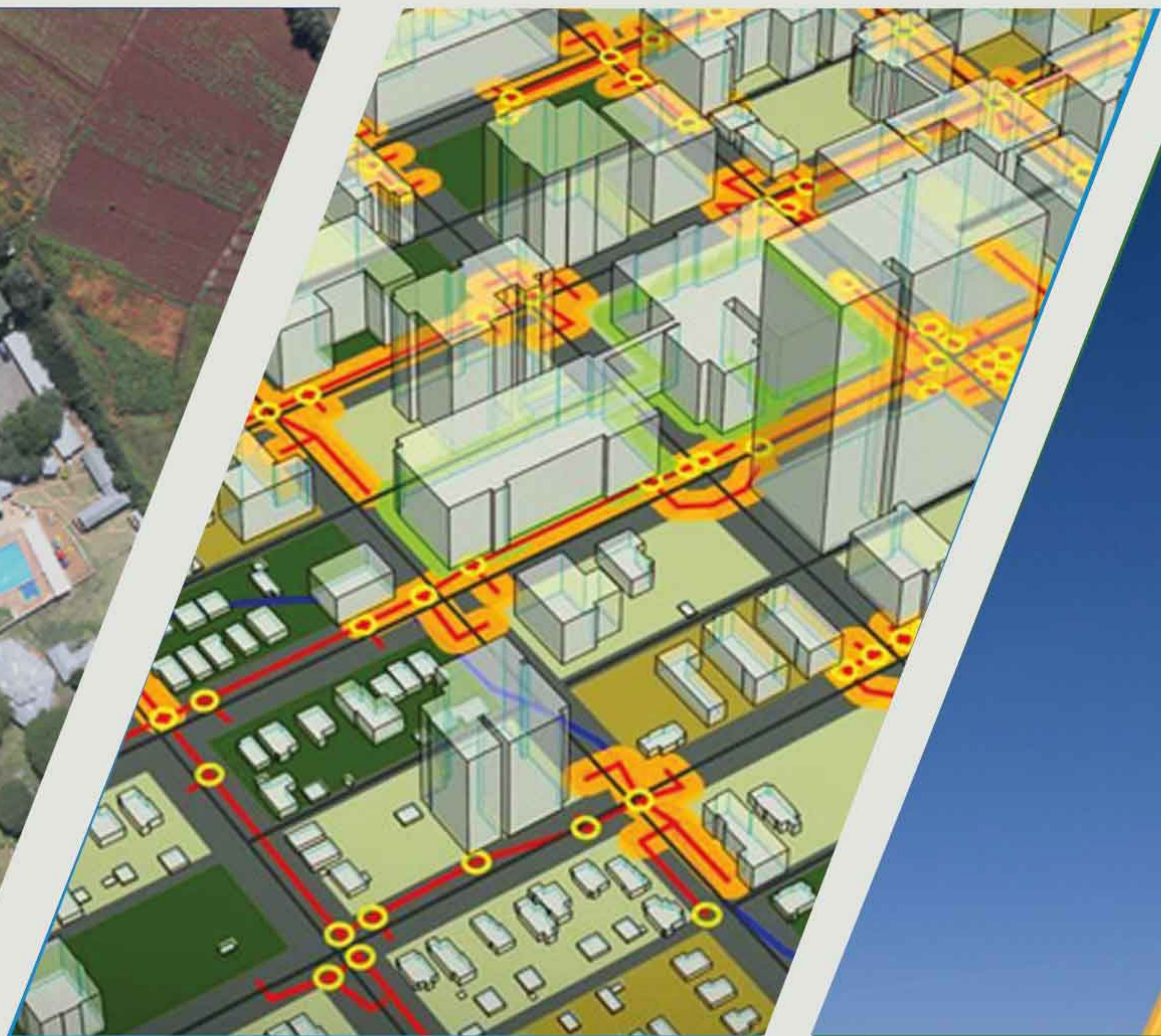
**NatureSurf**  
SYSTEMS  
MAPPING REDEFINED





### **Aerial Photography**

We offer rapid turn-around time and accurate processing of high-quality aerial photogrammetry products.



### **GIS & Mapping Services**

Our solutions help you understand and visualize your data to make timely and informed decisions based on authoritative data we provide.



### **Land Surveying**

Our highly experienced team of surveyors use state-of-the-art field equipment to provide highly detailed surveys to our clients in the region.

## **Who We Are**

### **Our Company**

NatureSurf Systems is a GIS company that specializes in aerial photography, land survey, satellite imagery, GIS services and training. We offer GIS project consulting and implementation services. Our data and technology enables organizations to create responsible and sustainable solutions to spatial problems.

### **Our Philosophy**

Our passion is to provide unrivaled quality mapping, photogrammetry and satellite imaging solutions. We apply latest technology and skills to deliver clear, diverse, accurate and timely results at the most affordable rates.

### **Our Mission**

To provide premium and affordable mapping solutions that fulfills customer requirements through skilled and committed staff.

### **Our Vision**

An enlightened and delighted customer benefiting from cost effective and value added mapping solutions.







Aerial Photo of Kwale Town



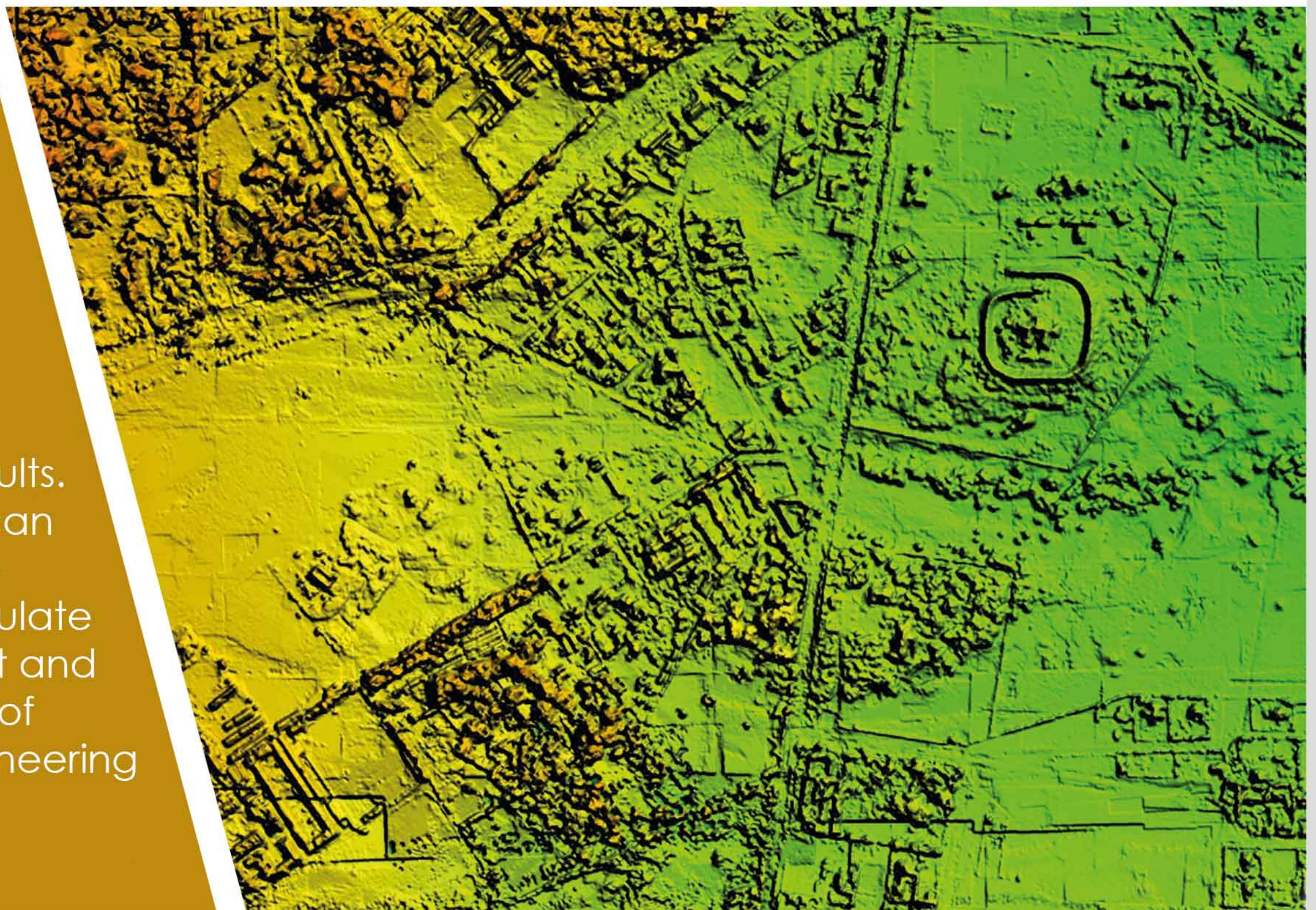
## AERIAL PHOTOS



NatureSurf Systems produces high quality, high resolution aerial mapping products. Our top of the range image processing software and our highly trained personnel ensure we deliver highly accurate, clear and high resolution products to our clients.

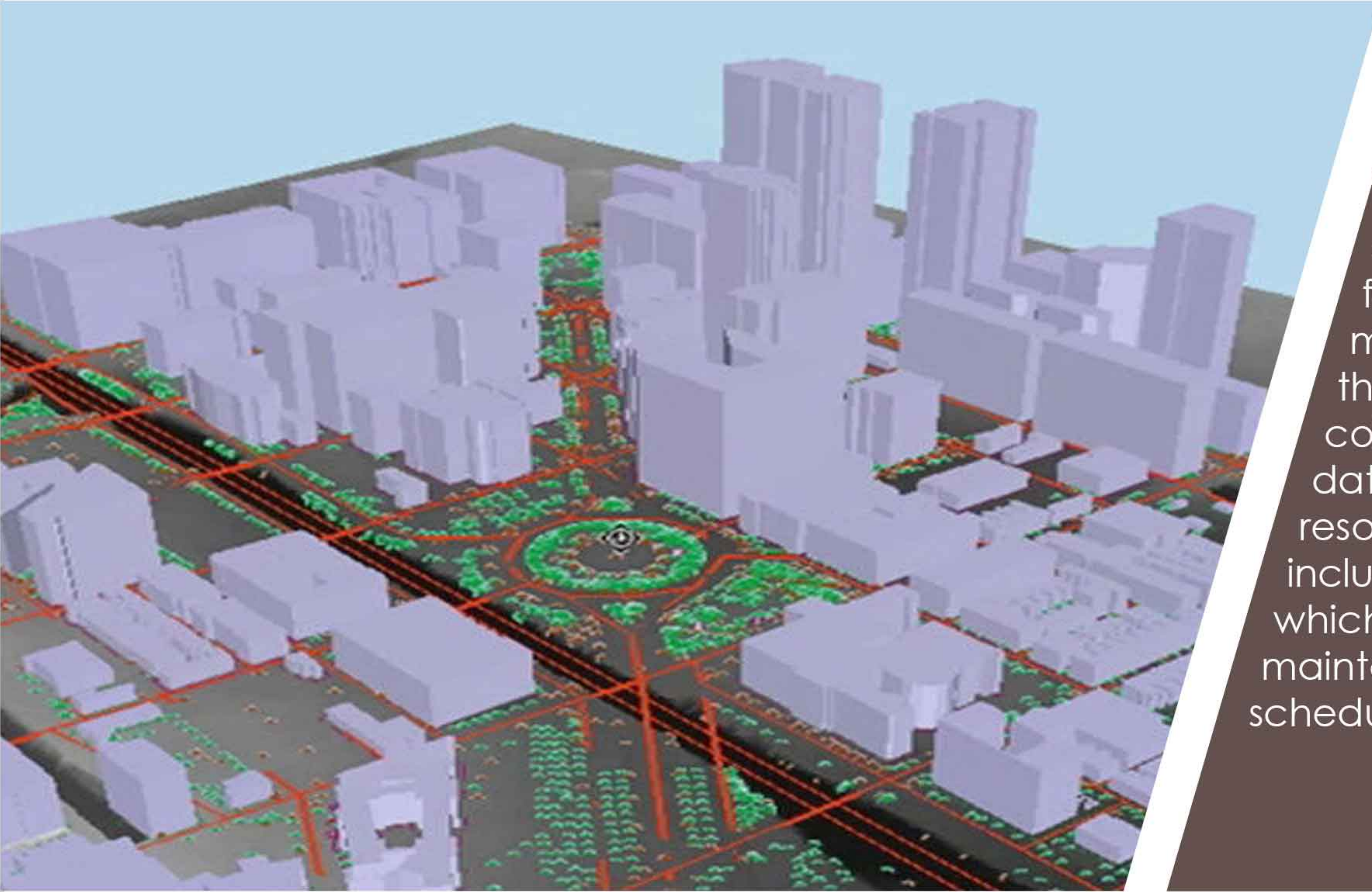
## DIGITAL TERRAIN MODEL (DTM)/ DIGITAL SURFACE MODEL (DSM)

NatureSurf Systems generates Digital Terrain Model (DTM) and Digital Surface Model (DSM) to enable effective planning and ultimately produce accurate project results. Our elevation data can be used to generate ground profiles, calculate volumes, perform cut and fill analysis, planning of utilities and civil engineering works among others.





## VECTOR DATA



NatureSurf Systems is at the forefront of data collection and analysis for digital asset management. We have the ability to accurately collect or digitize vector data from our high resolution aerial photos and include attribute information which will make your maintenance works and scheduling more effective.

## SATELLITE IMAGERY

NatureSurf Systems provides high resolution satellite imagery and image processing services for analysis and to support Geographic Information System (GIS) and other mapping and research applications.

Whether you require quick tasking for monitoring an emergency or a long term service to provide you with the means for long-term monitoring, we offer diverse services that will ensure you get exactly what you need.





## AERIAL SURVEY



We are specialists in the acquisition and processing of aerial photography, and in the creation of high quality digital imagery products. NatureSurf Systems is committed to investing in the latest capture and production technologies and by doing this we ensure the aerial photography products and services we provide are leading in the market.

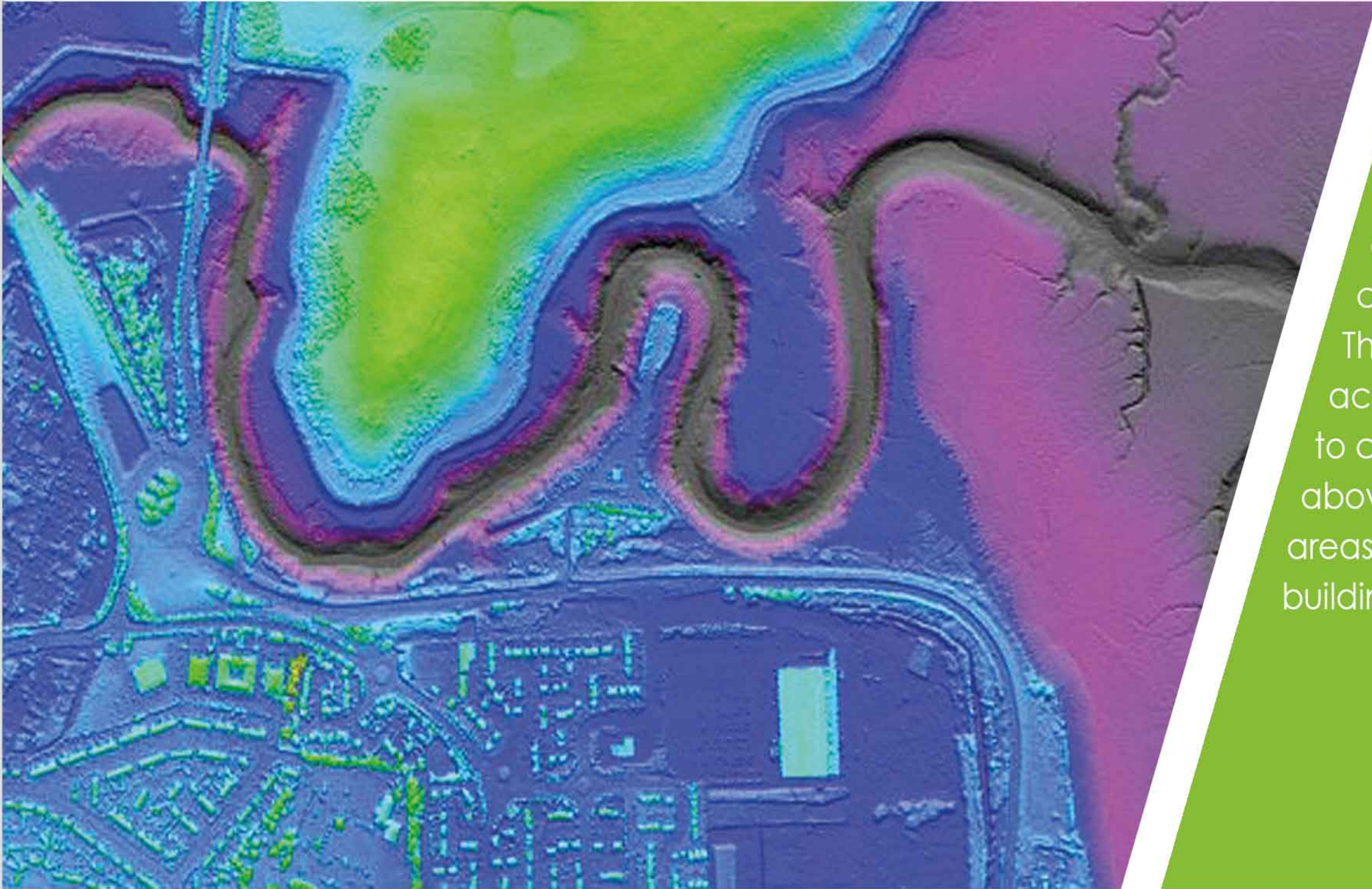
## LAND SURVEY

NatureSurf Systems provides services in various areas of survey such as Topographic surveys; Cadastral surveys; Engineering surveys; and Geodetic surveys. We have the latest data collection equipment and software to ensure fast and accurate results. Our surveyors are highly trained and experienced in all aspects of land survey.





## LiDAR DATA

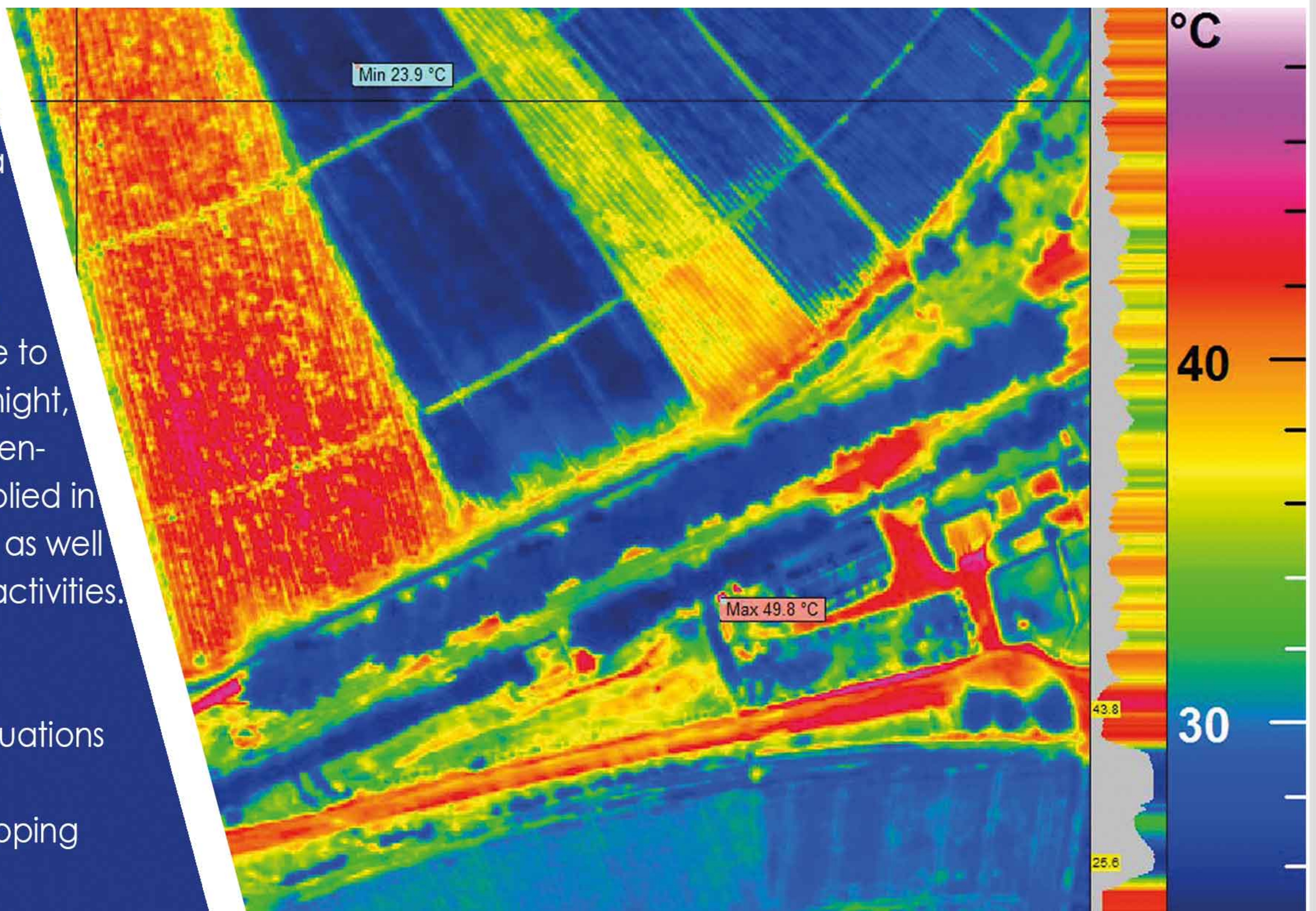


LiDAR data is the most accurate, convenient and cost-effective way to capture elevation information. The resolution and positional accuracy of LiDAR can be used to capture and measure above-ground features over large areas including power lines, building footprints and towers.

## THERMAL IMAGERY

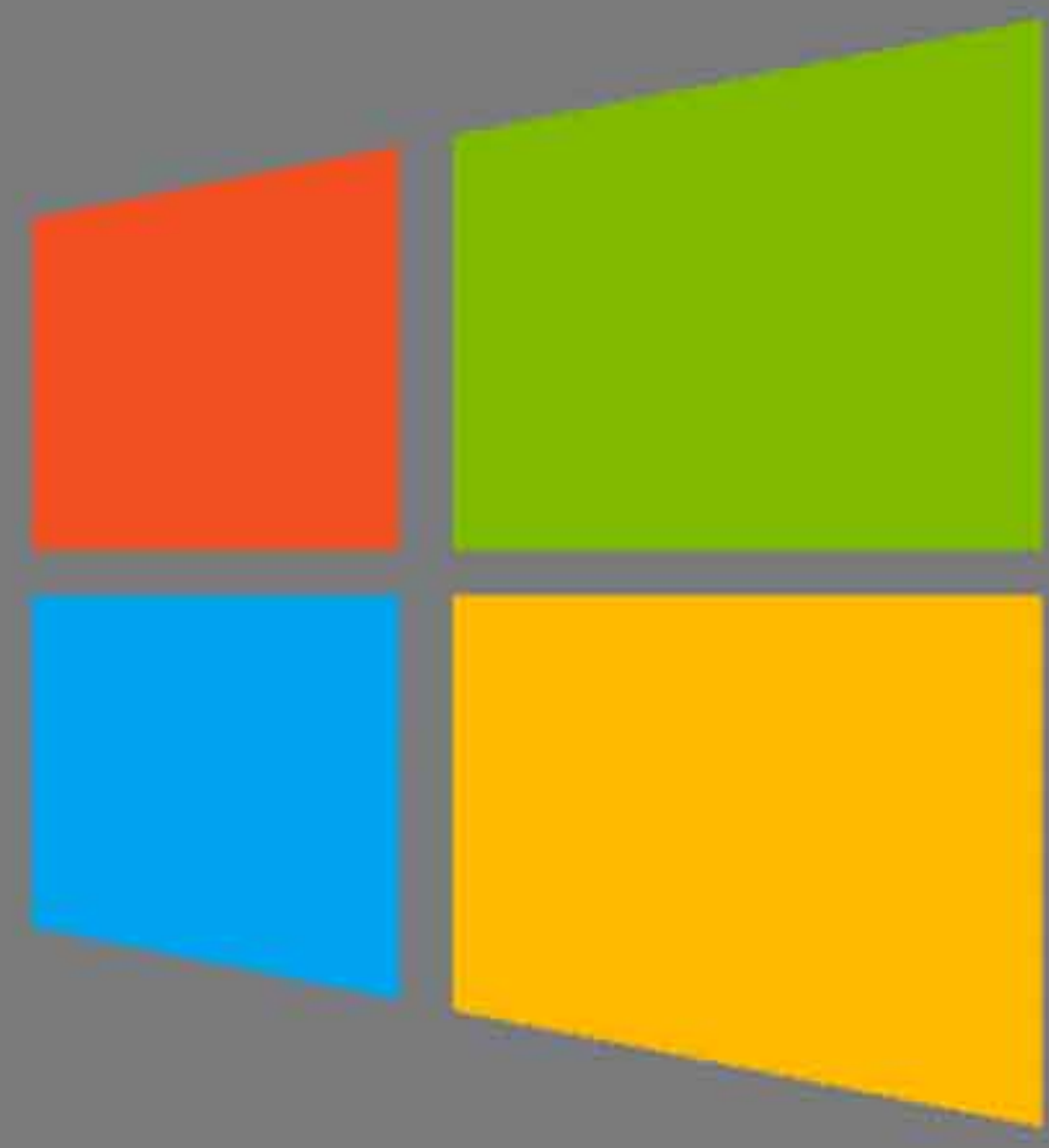
NatureSurf Systems has a high resolution thermal sensor system that detects a variety of anomalies to be used in a wide array of different applications. Using thermal sensors, we are able to detect human activities at night, under thick foliage, or in open-water. This data can be applied in search and rescue missions as well as for detection of illegal activities. Applications include:

- Energy Audit
- Building Infrastructure Evaluations
- Irrigation Analysis
- Underground Pipeline Mapping
- Wildfire Management





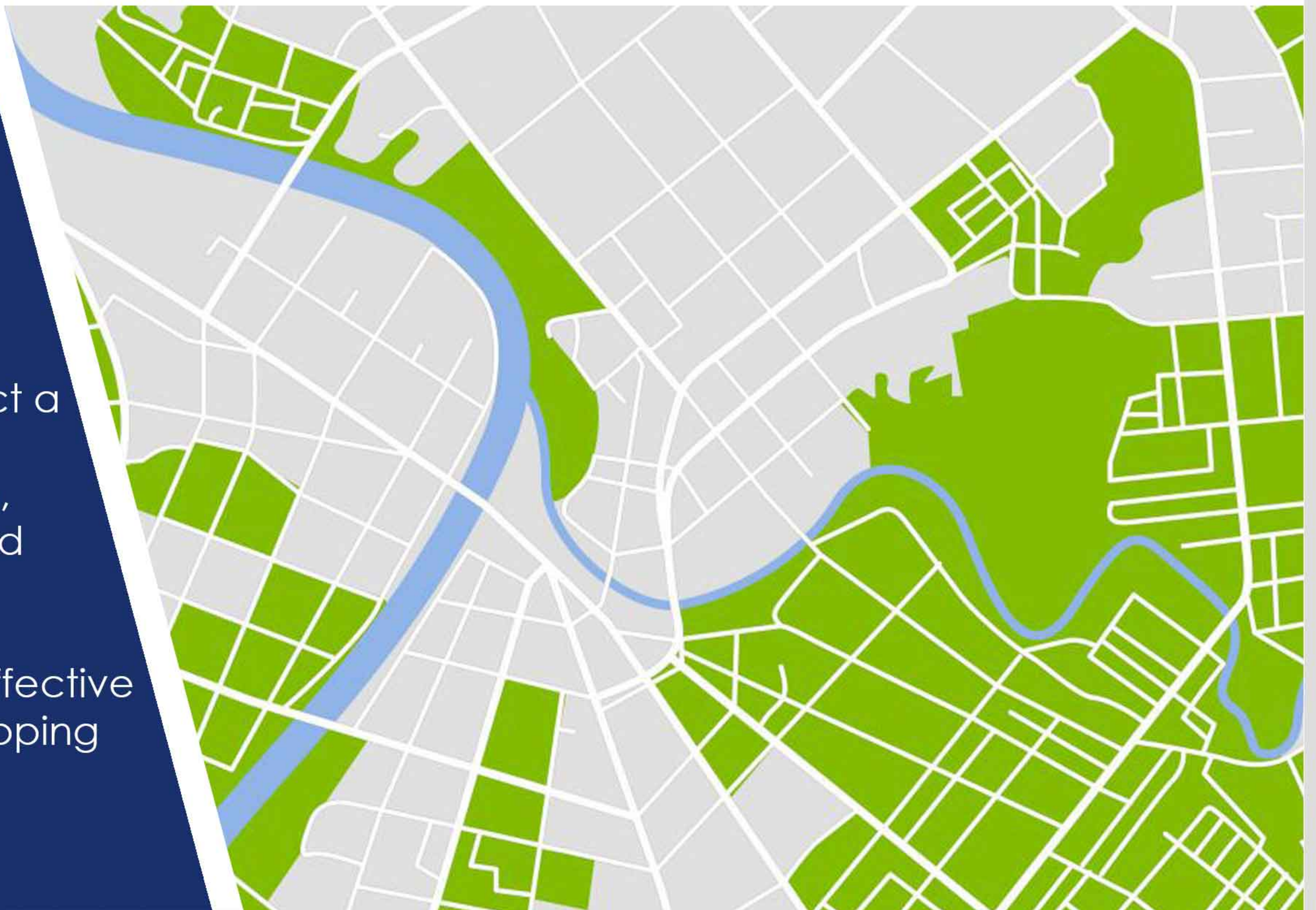
## APPLICATION DEVELOPMENT



NatureSurf Systems provides application development services for platforms such as Apple, Android and Windows. The mobile applications we build target smartphones, tablets and desktops. Our development focus is on apps which work on both online and offline mode. We emphasize simplicity and ease of use.

## GIS CONSULTANCY

GIS technology is increasingly used by organizations in all sectors. Our team of GIS consultants has vast experience to make your GIS project a success. We provide leading GIS expertise, technical advice, and training services. We deliver innovative, practical and cost-effective solutions for your mapping projects.





## WEB MAPPING



Web map applications provide focussed workflows and tools for your day to day tasks. NatureSurf Systems develops web apps that allow you to track assets, create dashboards, publish and share the latest maps, data and ideas on a single platform. We design apps which are easy to use and can be configured for all your users.

## GIS TRAINING

Our Training Program is designed to meet the needs of professionals and students who are interested in learning how to use GIS as a tool for managing and analyzing spatial data. The program meets the needs of new GIS users by introducing them to GIS concepts and GIS software. Our courses will also assist the seasoned GIS user who may be transitioning to the most recent version of the software.





# COMPANY RESOURCES

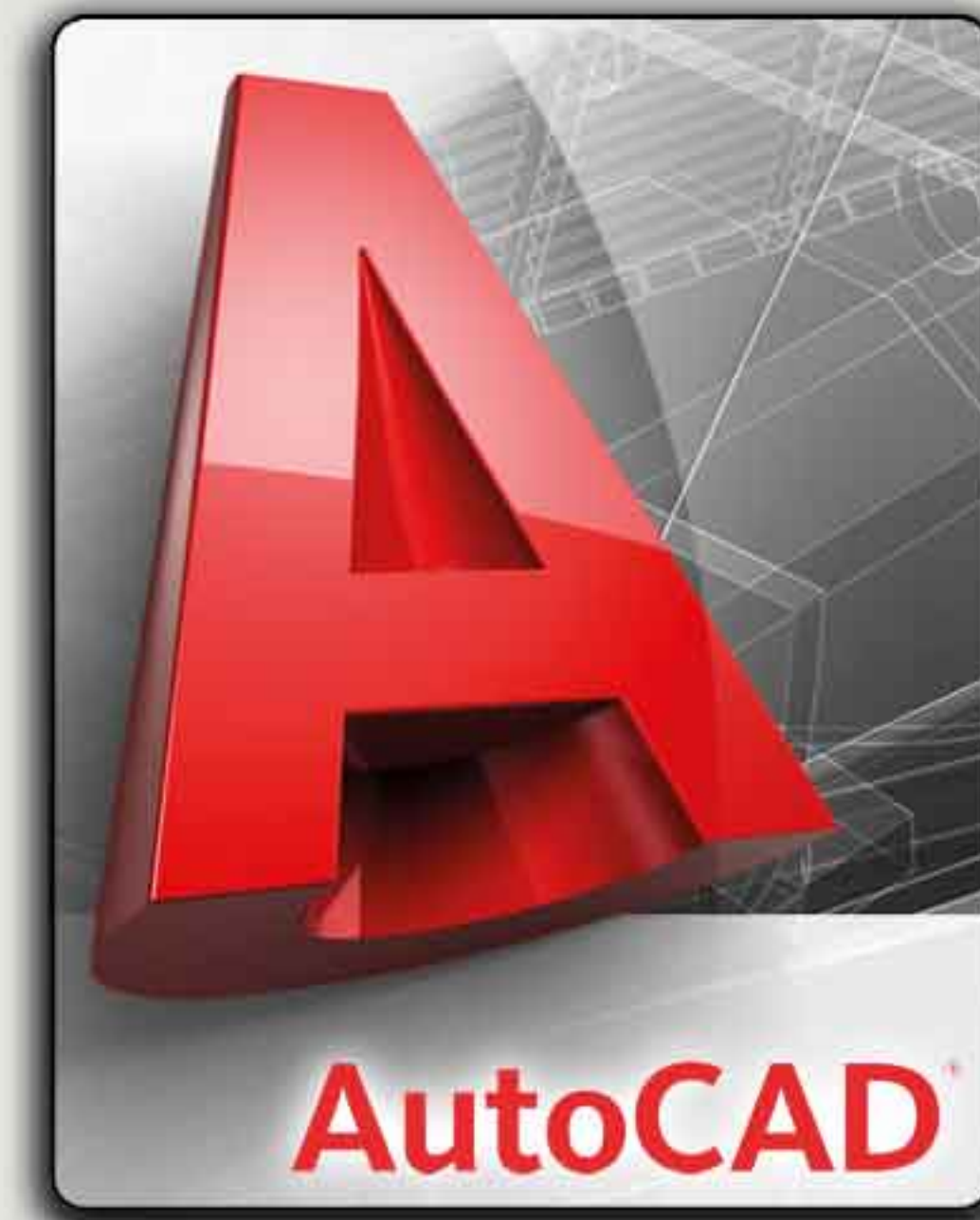


## Epson Stylus Pro 9890

Our processing and mapping unit uses a large format color printer for production of high quality hardcopy printouts such as orthophotos maps, thematic maps, topographical maps, civil and architectural designs, and survey plans. Our advanced Epson printer is capable of producing higher quality prints, at speeds almost twice as fast as previous generation.

## Mapping Software

Geographic Information Systems mapping software helps you understand and visualize data to make decisions based on the best information and analysis. For us to offer you a complete solution we use various software applications such as ArcGIS for Desktop, ArcGIS for Server, LISCAD, AutoCAD, Civil 3D Map 3D, ERDAS Imagine, ENVI, Global Mapper, Socet Set, and Icaros Processing Suite (IPS) among others.



SOCET SET<sup>®</sup>



## Aircraft

NatureSurf Systems has six (6) company owned aircraft dedicated for mapping projects. Our aircraft models include Cessna 206, Cessna 208 and Cessna 172. Our airborne team includes highly experienced and qualified mapping pilots.



# Company Resources

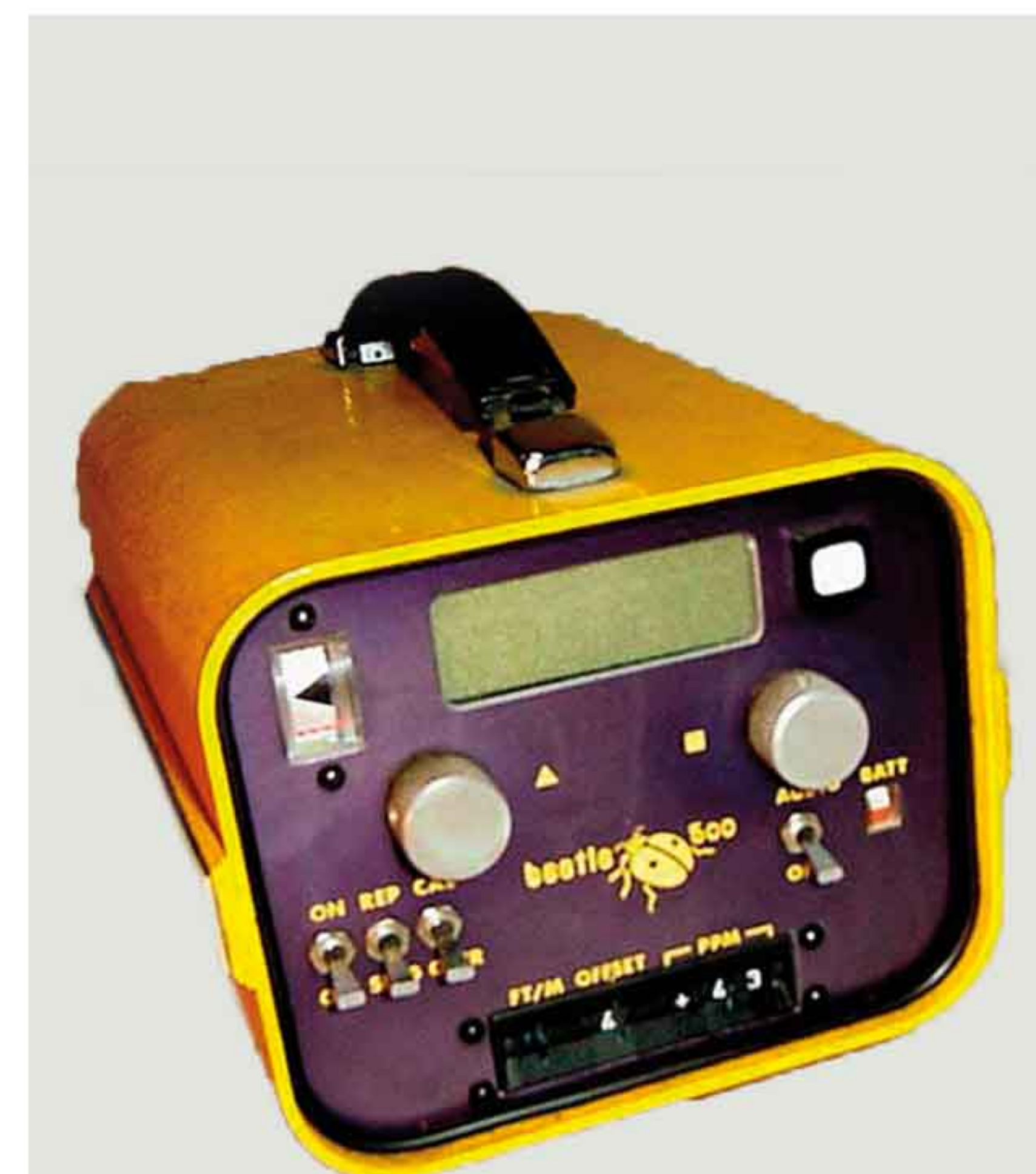
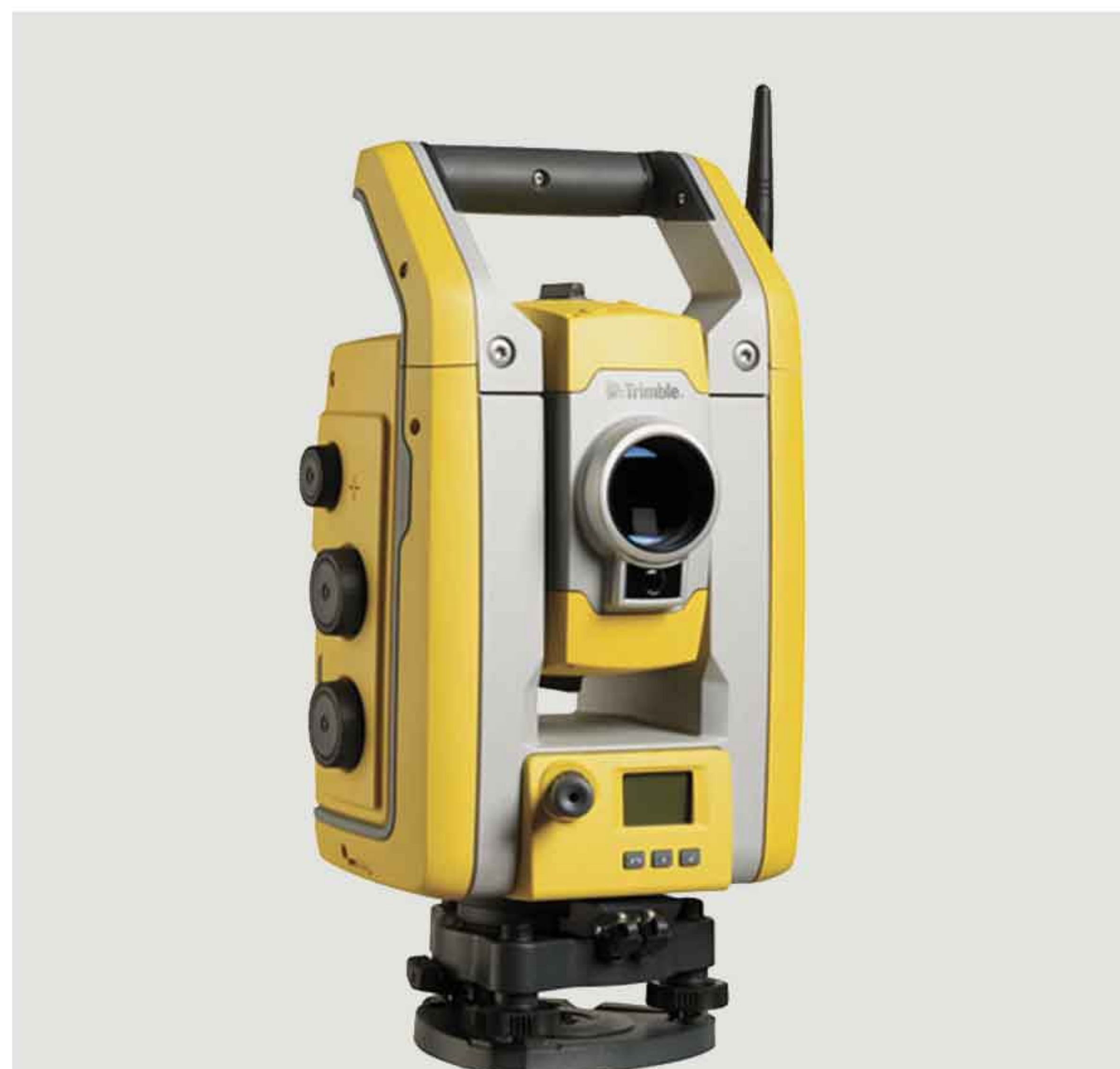
## Geodetic Receivers



## Handheld GPS and Field Computers

Our receivers are a flexible positioning solution for productive and accurate GIS data collection. We provide timely and accurate data for decision making and intergrate seamlessly with industry standard GIS systems and professional GIS data collection workflows. Our handheld GPS devices improve productivity in hundreds of industries by geo-enabling field workforces with high accuracy, rugged and easy to use products.

## Total Stations, EDMS, Automatic Levels





# Company Resources

## IDM 1000 Oblique Remote Sensing System

Icaros Digital Mapper (IDM) 1000 combines a high-accuracy photogrammetric nadir camera with four high-quality oblique cameras. Imagery collected using the IDM1000 can be used for applications including visualization, 3D city modeling and textures, elevation datasets (DSM, DTM, Point Clouds), public safety, and appraisal. Our camera delivers subpixel accuracy, high dynamic range, and true-color pixel collection.



## Icaros Thermal Camera



## Icaros Processing Suite (IPS)

The IPS is a unique application designed to enable excellent management of the images processing production line. The system delivers unmatched orthophoto production capabilities and efficiency by using a unique technological approach coupled with multicore CPU and GPU processing. This design enables high-rate orthophoto production which significantly reduces processing time.



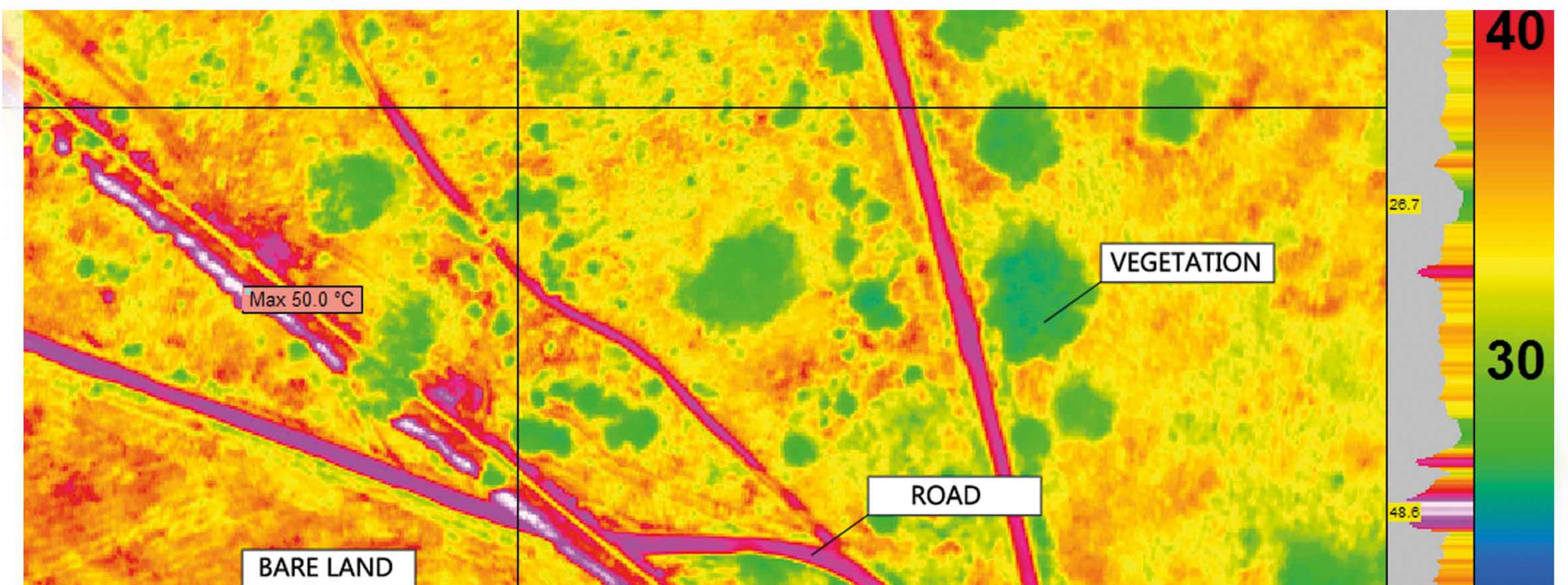
# Sample Projects



Mapping of Ukunda



Mapping of Sagana Kutus



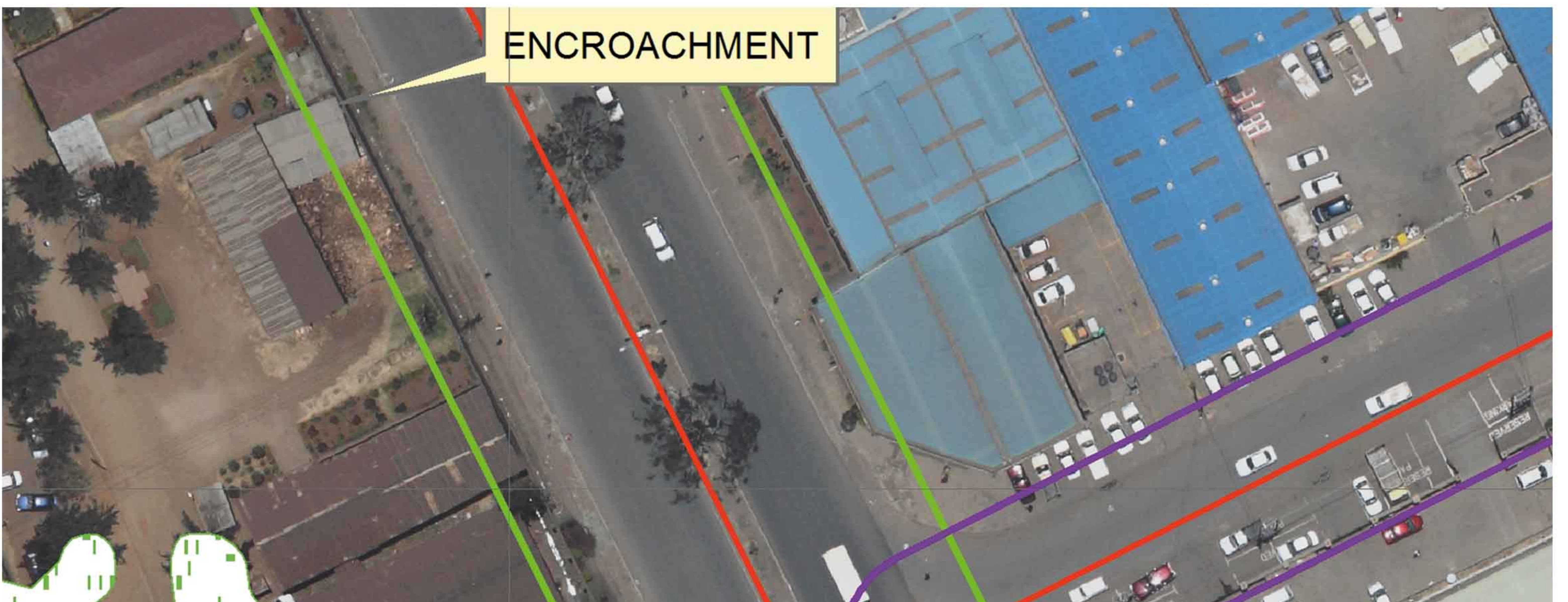
Sample Thermal Imagery



# Sample Projects



Mapping of Kwale Town



Aerial photography showing encroachment on a road reserve



Flood Mapping





Infrastructure & Utilities



Natural Resources



Government Industry



## *Get in touch*

NatureSurf Systems Limited  
3rd Floor, Antipest House,  
Wilson Airport  
P.O. Box 24850 - 00502  
Nairobi, Kenya.

Tel: +254 20 2662875

Email: [info@naturesurf.co.ke](mailto:info@naturesurf.co.ke)

Website: [www.naturesurf.co.ke](http://www.naturesurf.co.ke)

Mobile: +254 708 393380

+254 736 216348



**NatureSurf**  
SYSTEMS  
MAPPING REDEFINED